

Mountain Song Community School

Parent Survey Results

Spring 2019

SCHOOL PERCEPTIONS

Our mission is to help educational leaders gather, organize and use data to make strategic decisions.

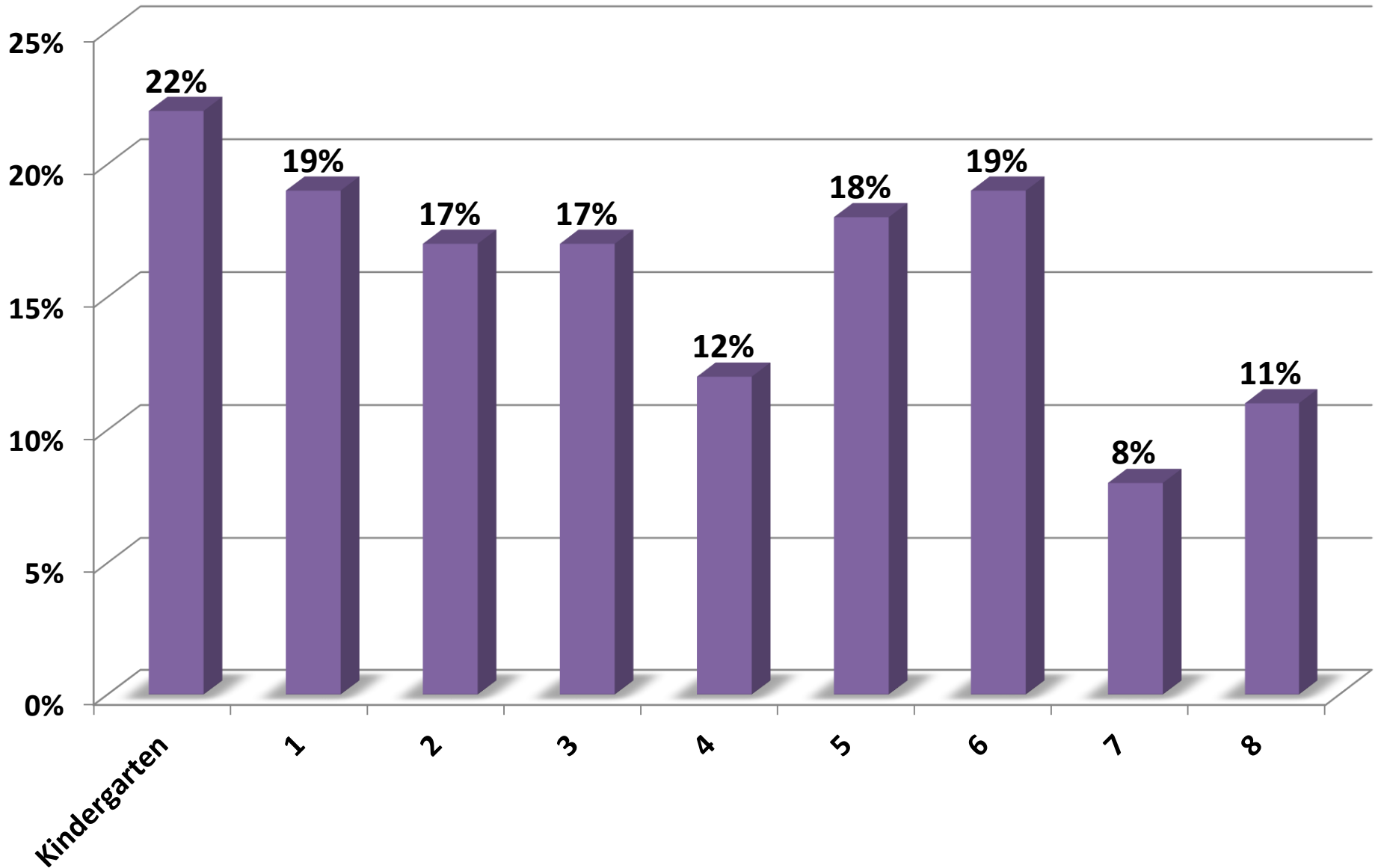
- Founded in 2002 to provide independent and unbiased research
- Conducted over 10,000 staff, student and parent surveys for school improvement
- Helped more than 600 districts navigate the strategic planning and referendum planning process

Survey Summary

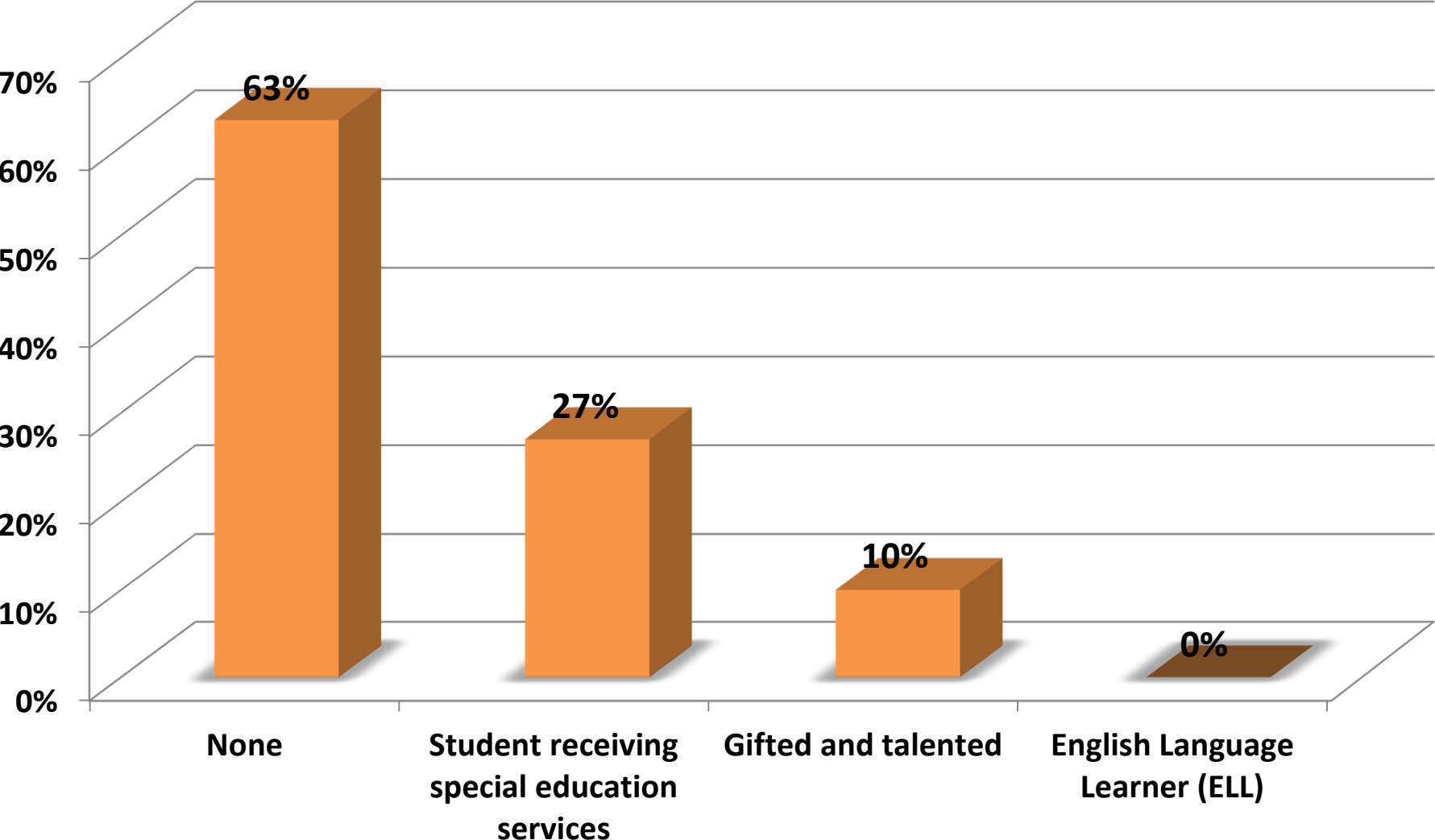
- The Parent Survey was conducted in April of 2019.
- Parents of students in grades K – 8 were sent an email invitation to take the survey online. Each email contained a unique survey link that could only be used once.
- Total responses = 100

Respondent Information

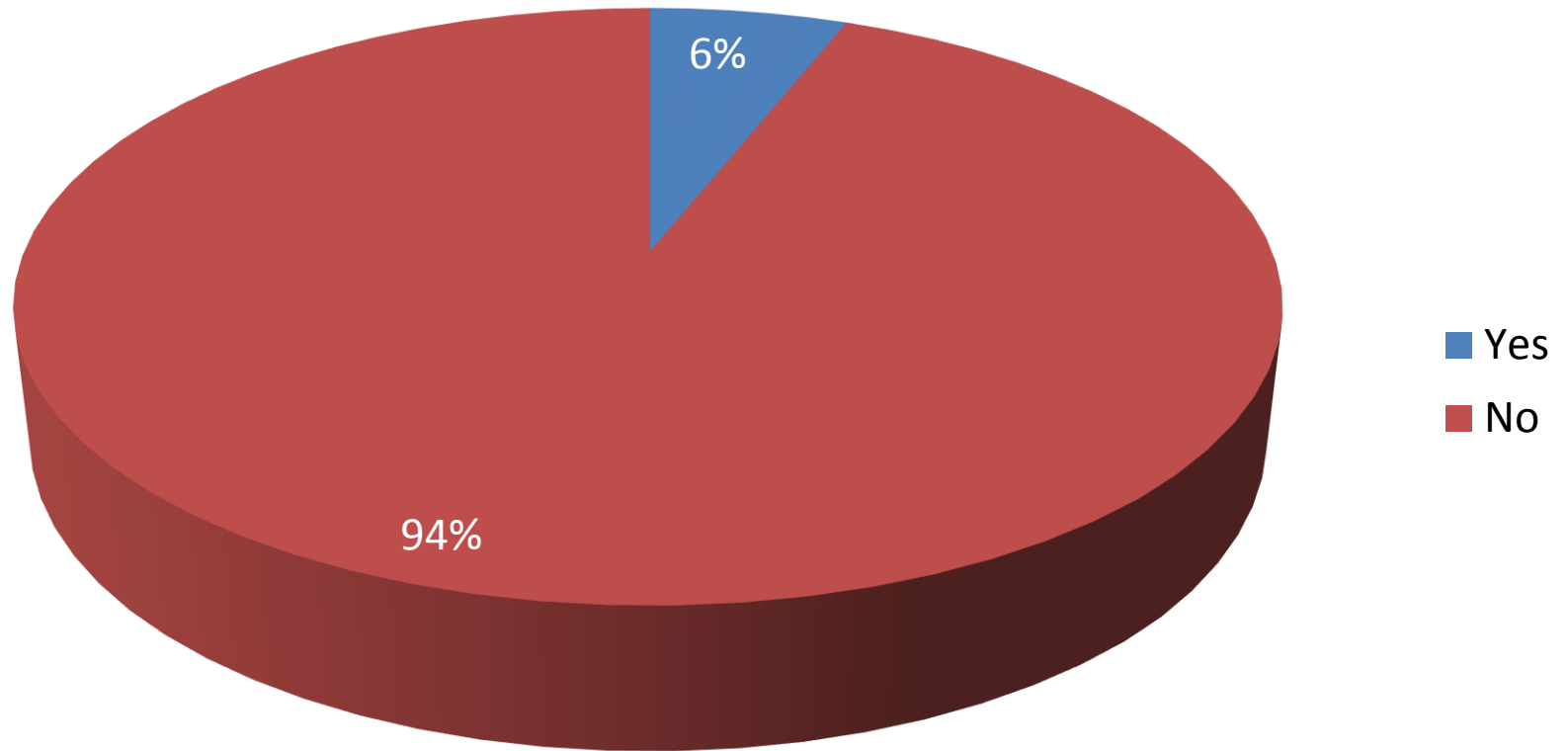
Grade level of your child(ren):



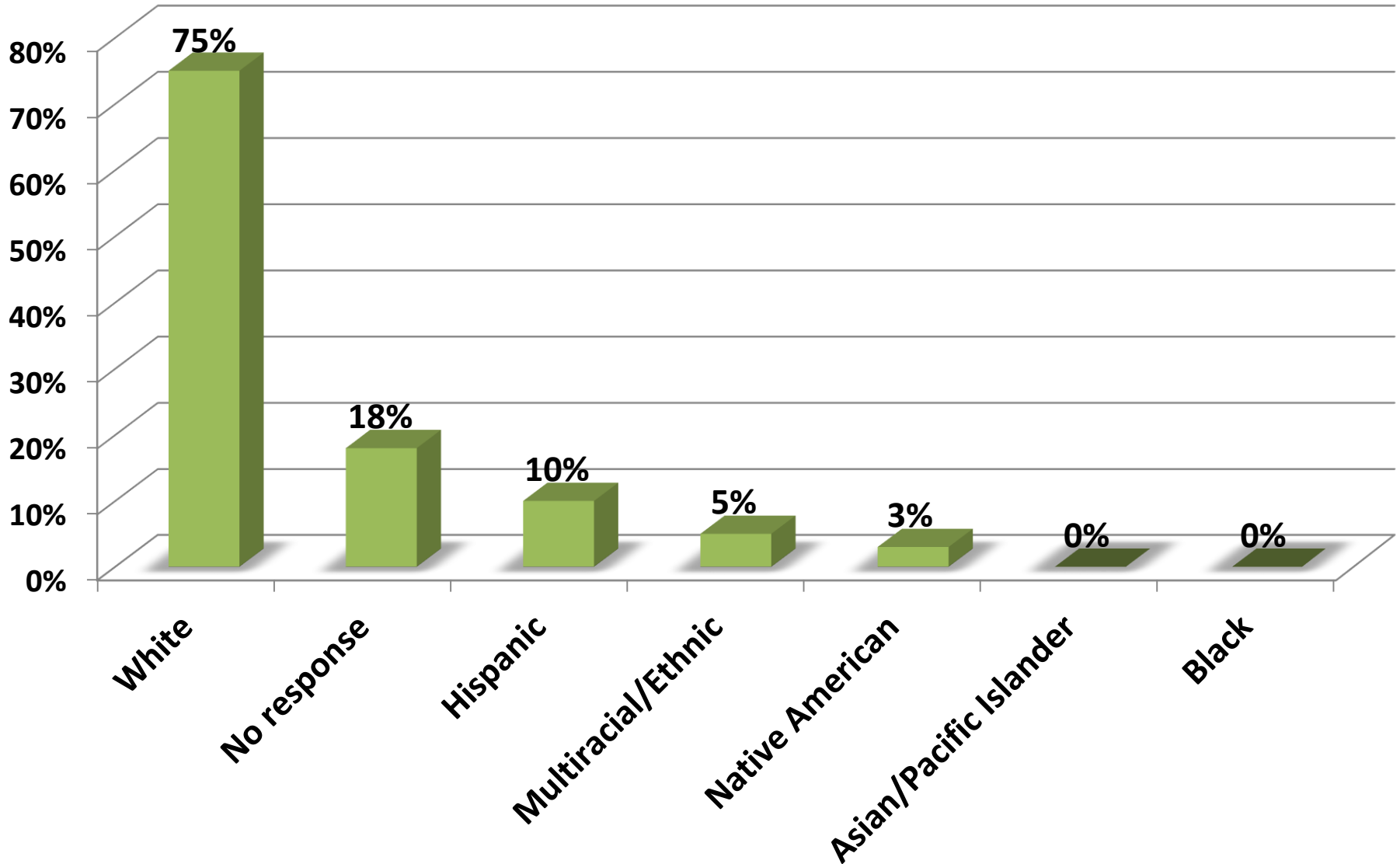
One or more of my children are identified as:



Is your child(ren) enrolled in home school enrichment?

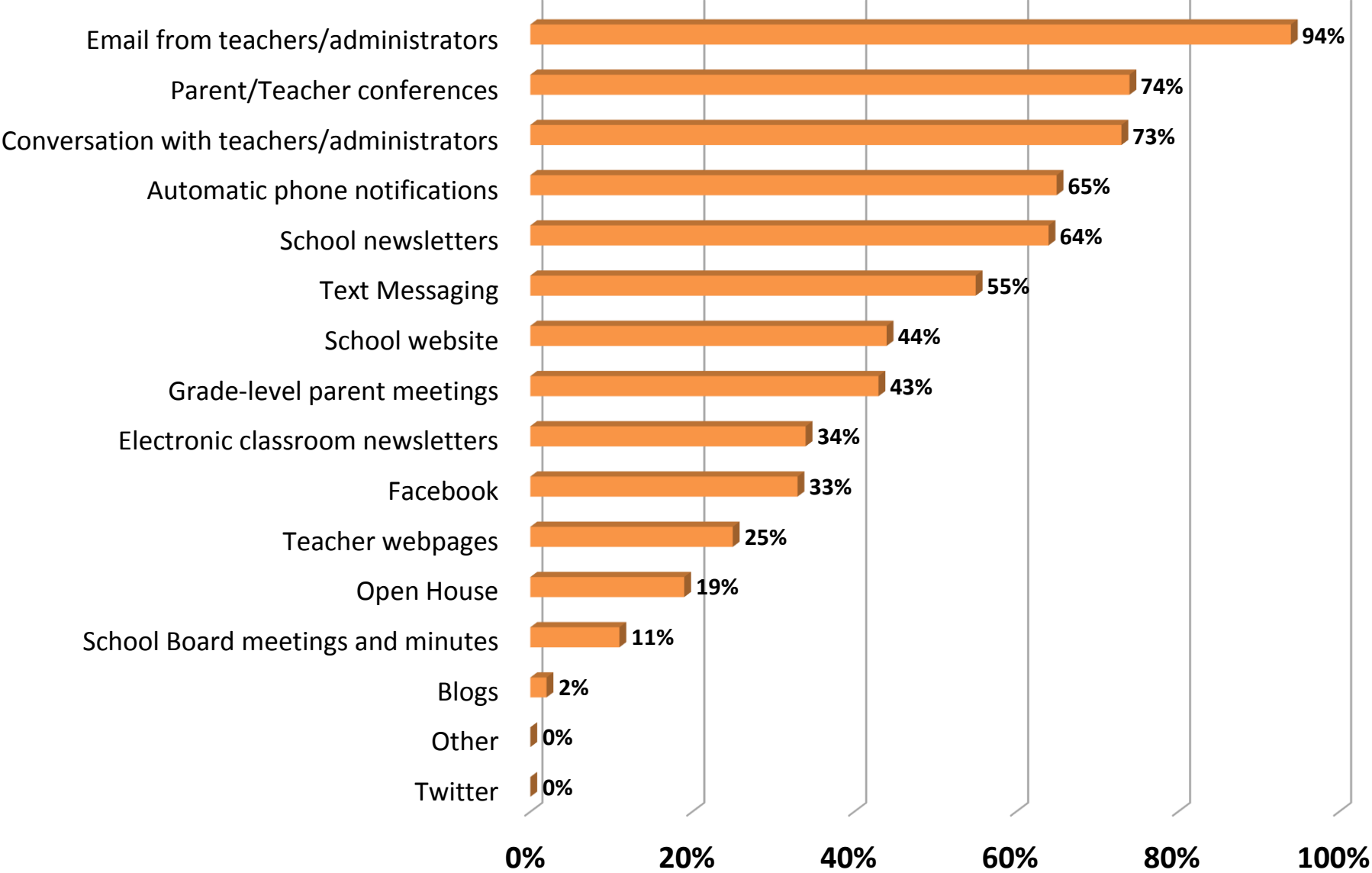


I identify my ethnicity as:

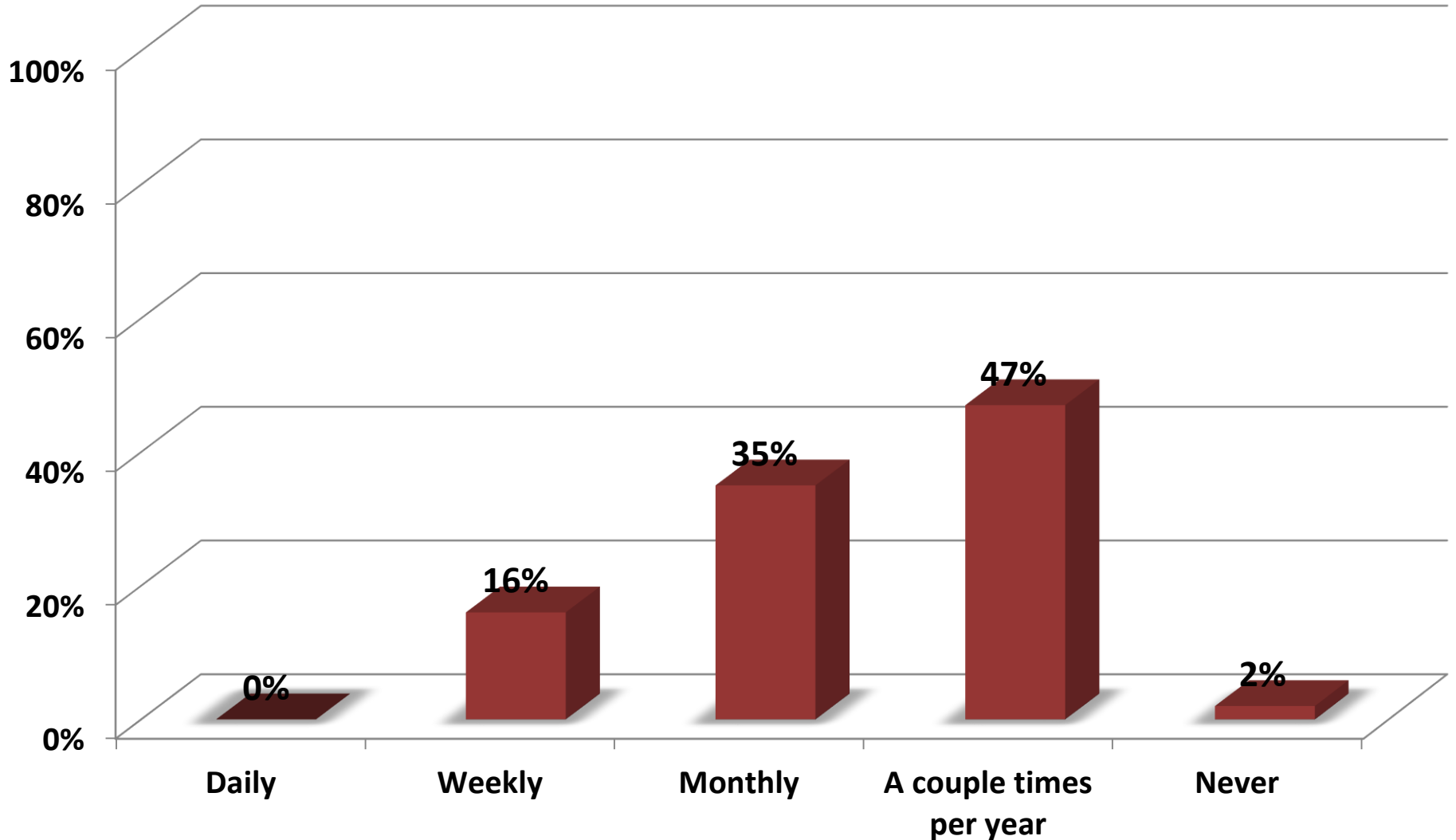


Communication

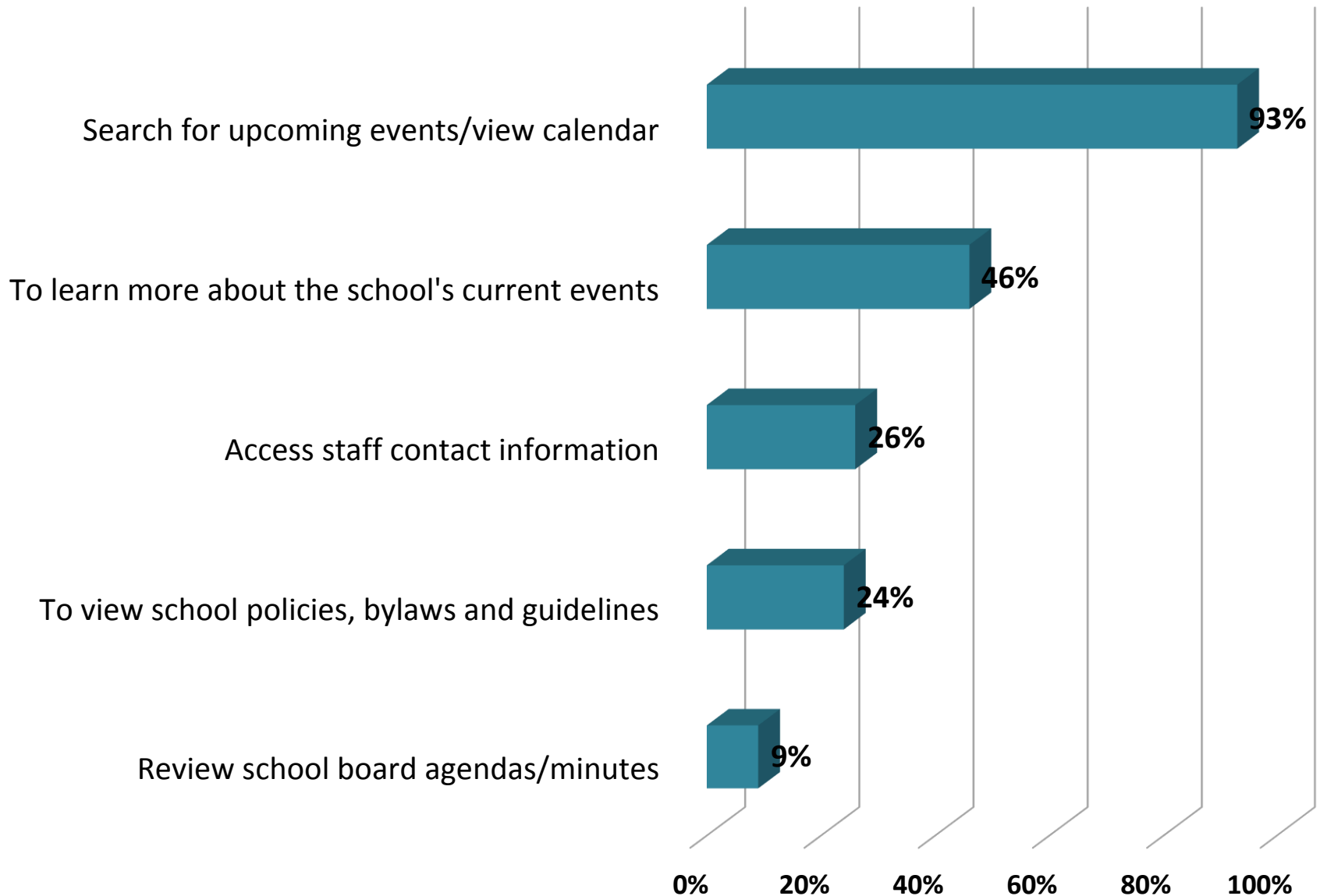
How would you like to receive school information?



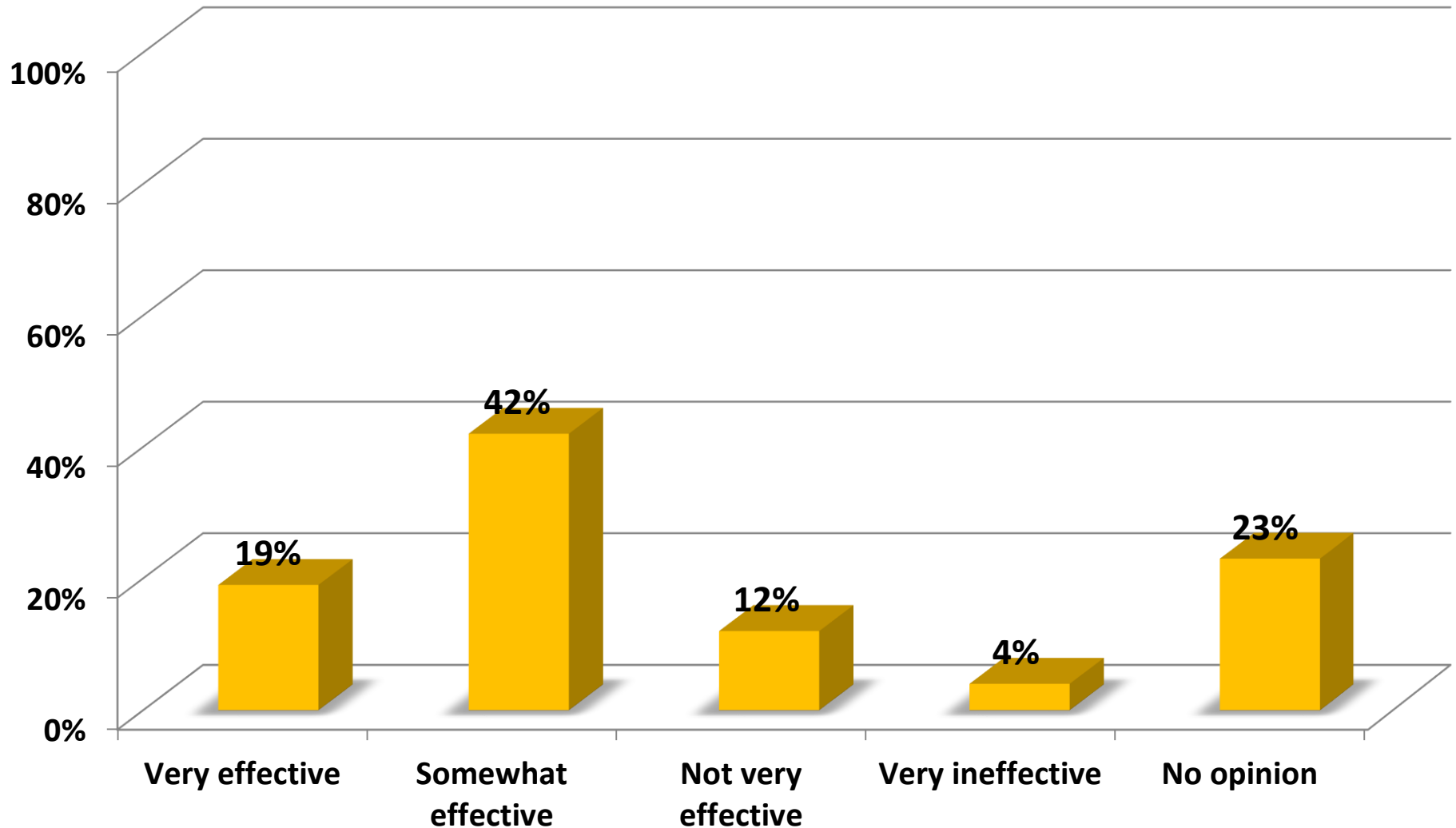
How often do you visit the School's website?



Why do you visit the School's website?



How effective is the School's website in providing timely and meaningful information?



Programs and Services

How important is this item to the success of our students? (Slide 1/2)

Very important (4), Important (3), Somewhat important (2), Not important (1)

Item	Average
Critical thinking & problem solving	3.93
Emotional and social learning	3.86
Art	3.84
Reading/Literature/Vocabulary	3.78
Writing/Grammar	3.75
Agricultural Arts	3.74
Science	3.73
Physical education (Games and movement)	3.72
Math	3.67
Programming for struggling students	3.60
Music	3.57

How important is this item to the success of our students? (Slide 2/2)

Very important (4), Important (3), Somewhat important (2), Not important (1)

Item	Average
Cooking Arts	3.56
Social Studies	3.55
Programming for children with disabilities	3.39
Health and Wellness Education	3.38
School counseling	3.36
Handwork	3.30
Programming for English Language Learners (ELL)	3.15
Foreign language	3.09
Programming for gifted & talented students	3.09
Computer and technology skills	2.32

How are we doing? (Slide 1/2)

Great (4), Good (3), Fair (2), Poor (1)

Item	Average
Handwork	3.56
Programming for English Language Learners (ELL)	3.56
Cooking Arts	3.54
Physical education (Games and movement)	3.51
Agricultural Arts	3.46
Art	3.42
Emotional and social learning	3.37
Reading/Literature/Vocabulary	3.33
Critical thinking & problem solving	3.27
Social Studies	3.16
Music	3.12

How are we doing? (Slide 2/2)

Great (4), Good (3), Fair (2), Poor (1)

Item	Average
Writing/Grammar	3.11
Math	2.97
Science	2.90
Health and Wellness Education	2.90
School counseling	2.88
Programming for children with disabilities	2.86
Programming for struggling students	2.75
Foreign language	2.47
Computer and technology skills	2.45
Programming for gifted & talented students	2.40

Gap Analysis (Slide 1/2)

Importance: *Very important (4), Important (3), Somewhat important (2), Not important (1)*

Performance: *Great (4), Good (3), Fair (2), Poor (1)*

Item	Importance	Performance	Gap
Programming for English Language Learners (ELL)	3.15	3.56	0.41
Handwork	3.30	3.56	0.26
Computer and technology skills	2.32	2.45	0.13
Cooking Arts	3.56	3.54	-0.02
Physical education (Games and movement)	3.72	3.51	-0.21
Agricultural Arts	3.74	3.46	-0.28
Social Studies	3.55	3.16	-0.39
Art	3.84	3.42	-0.42
Music	3.57	3.12	-0.45
Reading/Literature/Vocabulary	3.78	3.33	-0.45
Health and Wellness Education	3.38	2.90	-0.48

Gap Analysis (Slide 2/2)

Importance: *Very important (4), Important (3), Somewhat important (2), Not important (1)*

Performance: *Great (4), Good (3), Fair (2), Poor (1)*

Item	Importance	Performance	Gap
School counseling	3.36	2.88	-0.48
Emotional and social learning	3.86	3.37	-0.49
Programming for children with disabilities	3.39	2.86	-0.53
Foreign language	3.09	2.47	-0.62
Writing/Grammar	3.75	3.11	-0.64
Critical thinking & problem solving	3.93	3.27	-0.66
Programming for gifted & talented students	3.09	2.40	-0.69
Math	3.67	2.97	-0.70
Science	3.73	2.90	-0.83
Programming for struggling students	3.60	2.75	-0.85

School Feedback

Please indicate your level of agreement for each item:

Strongly agree (5), Agree (4), Disagree (2), Strongly disagree (1)

(Slide 1/3)

Item	% Strongly agree/ Agree	Average (n)	Similar School Comparison	Difference
I believe the School staff inspire my child's best efforts.	97%	4.58 (85)	4.14	0.44
Teachers personalize instruction to meet my child's needs.	89%	4.18 (82)	3.77	0.41
The amount of homework given to my child is appropriate.	88%	4.29 (76)	3.91	0.38
I have at least one School staff member I feel comfortable contacting when I have an idea or concern.	97%	4.66 (88)	4.30	0.36
Parent/teacher conferences provide productive communication.	91%	4.46 (84)	4.11	0.35
I'm proud of our School.	94%	4.49 (87)	4.24	0.26
School staff treat everyone with dignity and respect.	96%	4.42 (85)	4.16	0.26
My child has a positive relationship with at least one adult at School.	99%	4.74 (88)	4.50	0.24

Please indicate your level of agreement for each item:

Strongly agree (5), Agree (4), Disagree (2), Strongly disagree (1)
(Slide 2/3)

Item	% Strongly agree/ Agree	Average (n)	Similar School Comparison	Difference
My child enjoys going to School.	90%	4.35 (88)	4.11	0.24
I am satisfied with the communication that comes from the School.	85%	4.09 (87)	3.90	0.19
I feel comfortable sharing ideas for school improvement with staff.	83%	3.96 (76)	3.78	0.18
A climate of openness and trust exists between School administration and parents.	86%	4.13 (80)	3.94	0.18
When my child has a problem at School, he/she knows how to get help.	88%	4.09 (82)	3.93	0.15
School facilities are clean and well-kept.	95%	4.55 (86)	4.40	0.14
I receive enough information to understand my child's progress.	85%	4.06 (86)	3.93	0.13
My child feels safe at School.	94%	4.42 (88)	4.31	0.11

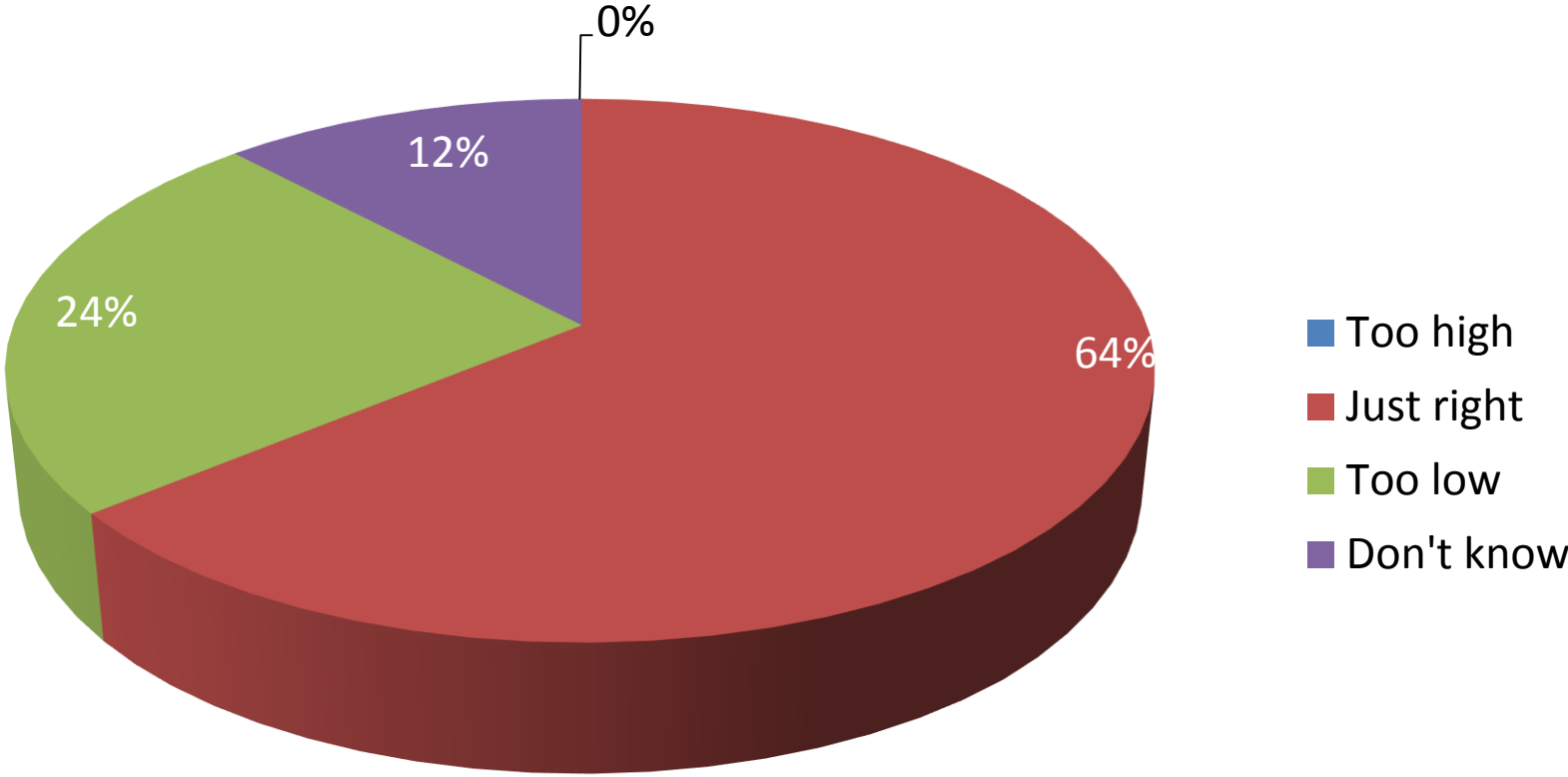
Please indicate your level of agreement for each item:

Strongly agree (5), Agree (4), Disagree (2), Strongly disagree (1)

(Slide 3/3)

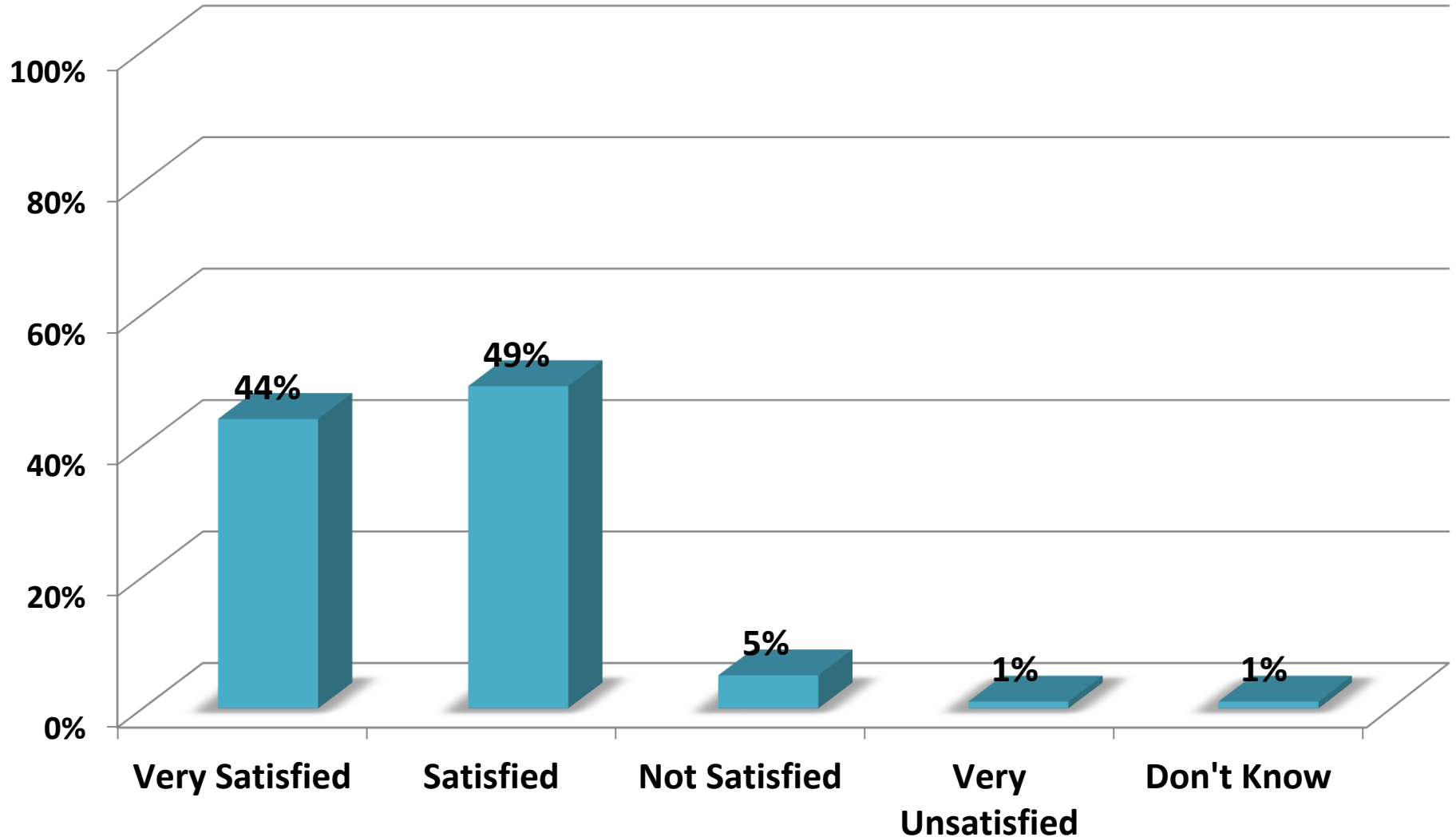
Item	% Strongly agree/ Agree	Average (n)	Similar School Comparison	Difference
I am satisfied with our School's efforts to prevent bullying.	75%	3.85 (78)	3.73	0.11
My child is being adequately prepared for the next grade level.	96%	4.30 (82)	4.21	0.09
The School has a culture of high expectations.	71%	3.55 (77)	3.89	-0.34
The School provides appropriate opportunities for parental involvement.	94%	4.52 (87)	N/A	N/A
I would recommend this School to a friend.	92%	4.45 (87)	N/A	N/A
I feel welcomed at School.	93%	4.43 (88)	N/A	N/A
The School employs high-quality teachers.	92%	4.34 (83)	N/A	N/A
I am comfortable contacting the principal/executive leadership team.	79%	4.00 (81)	N/A	N/A

Academic expectations in this school are:



Overall Satisfaction

Overall, how satisfied are you with the School?



Please indicate your level of agreement for each item.

Strongly agree (5), Agree (4), Disagree (2), Strongly disagree (1)

Item	% Strongly agree/ Agree	Average (n)	Similar School Comparison	Difference
The School is run effectively.	87%	4.05 (80)	N/A	N/A
The School has effective financial management.	71%	3.59 (51)	N/A	N/A
The School is heading in the right direction.	89%	4.14 (72)	N/A	N/A

School Perceptions Parent Engagement Indexes

There are 5 indexes of parent engagement. The Parent Engagement Survey has key questions that feed each one, thus, producing an index score. The score is the average of the responses from these key questions.

5 Indexes of Parent Engagement

1. Culture of Educational Excellence:

- a. Academic Expectations
- b. Rigor
- c. High Standards
- d. Relevance

2. Effective Teaching:

- a. Effective instructional techniques
- b. Individual attention to students
- c. Appropriate use of homework
- d. Collaborative/great teachers

3. Safe and Healthy Schools:

- a. Safe, supportive and healthy learning environment (no bullying)
- b. Appropriate balance between school stress and life balance
- c. Facilities
- d. Diversity

4. Leadership:

- a. Clear vision/mission
- b. Effective communication
- c. Good planning
- d. Well organized

5. Sense of Community:

- a. Pride/unity
- b. Strong student morale
- c. Opportunities for families provide input/feedback
- d. Family Involvement

How do your index scores compare to similar schools?

Strongly agree (5), Agree (4), Disagree (2), Strongly disagree (1)

Index	Average (n)	Similar School Comparison	Difference
Sense of Community	4.58 (88)	4.23	0.35
Effective teaching	4.18 (86)	3.95	0.23
Safe and Healthy Schools	4.53 (88)	4.35	0.19
Leadership	4.06 (87)	3.91	0.15
Culture of Educational Excellence	4.06 (85)	4.03	0.03

Thank you!